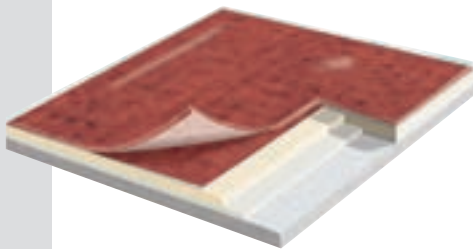


# MULTILAYERED FLOORING

## TARALAY INITIAL

### ▶ TARALAY INITIAL COMFORT



#### **Impact - Strada - Pacifica**

TARALAY INITIAL COMFORT is a foam backed vinyl floorcovering available in 2m wide sheet form and providing high sound insulation (19 dB).

The transparent wearlayer is treated with ProtecSol<sup>®</sup>, a UV cured, antiglazing treatment, which facilitates ease of maintenance and eliminates the use of acrylic emulsion (metallisation).

The product has antistatic properties (AS Class 1) and incorporates Sanosol<sup>®</sup>, a fungistatic and bacteriostatic treatment.

# TARALAY INITIAL

 Comfort	<b>19dB</b>	<b>Protocolsol®</b>	<b>Sanosol®</b>	 100% recyclable
---	-------------	---------------------	-----------------	---

- ▶ Provides cushioning underfoot
- ▶ Excellent sound insulation: 19 dB
- ▶ Reduces impact noise in circulation areas by 8 to 10 times compared to solid flooring
- ▶ Pure vinyl flooring (group T)
- ▶ Fungistatic and bacteriostatic Sanosol® treatment
- ▶ Protocolsol® for the easiest acoustic product to maintain on the market

## TARALAY INITIAL COMFORT Impact - Strada - Pacifica

### DESCRIPTION

Total thickness	EN 428	mm	3.80
Thickness of wearlayer	EN 429	mm	0.65
Weight	EN 430	g/m <sup>2</sup>	2975
Width of sheet	EN 426	cm	200
Length of sheet	EN 426	lm	25




### CLASSIFICATION

Norm / Product specification	-	-	EN 651
European classification	EN 685	class	34-42
Fire rating	EN 13501-1	class	Bfl-s1
Static electrical propensity	EN 1815	kV	< 2
Slip resistance wet	DIN 51 130	class	R10

### PERFORMANCES

Wear resistance	EN 660.2	mm <sup>3</sup>	≤ 2.0
Wear group	EN 651	group	T
Dimensional stability	EN 434	%	≤ 0.40
Residual indentation (requirement)	EN 433	mm	≤ 0.20
Residual indentation (value)	-	mm	0.13
Impact sound insulation	EN ISO 717-2	dB	19
Thermal conductivity	EN 12 524	W/(m.k)	0.25
Colour fastness	EN 20 105 - B02	degree	≥ 6
Chemical product resistance	EN 423	-	OK
Fungistatic & bacteriostatic treatment	-	-	Sanosol®
Surface treatment	-	-	Protocolsol®

### CE MARKING

	EN 14041	  
		

# MULTILAYERED FLOORING

## TARALAY INITIAL COMFORT



# IMPACT

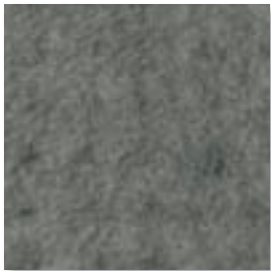


19dB

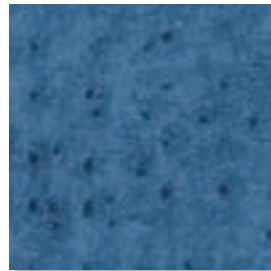
Protecsol®

Sanosol®

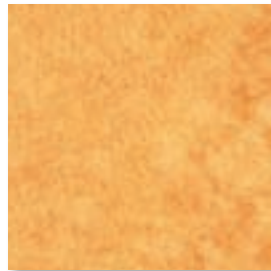
100% recyclable



0444 Cendre



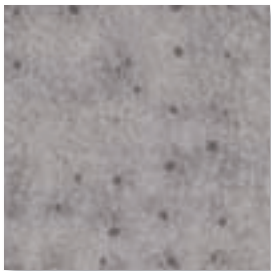
0440 Gauloise



0452 Colza



0442 Questsche



0441 Souris



0443 Azur



0445 Jade



0448 Brique



0451 Etain



0447 Glacier



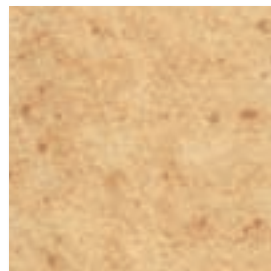
0446 Celadon



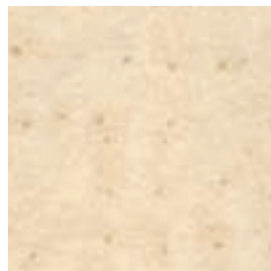
0449 Epice



0453 Chamois



0454 Gazelle



0455 Grege



0450 Abricot

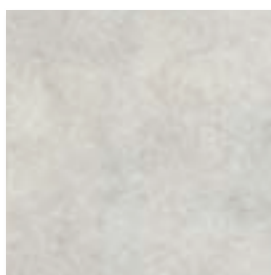
# MULTILAYERED FLOORING

## TARALAY INITIAL COMFORT

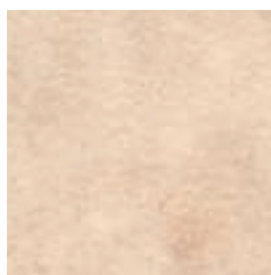


# STRADA

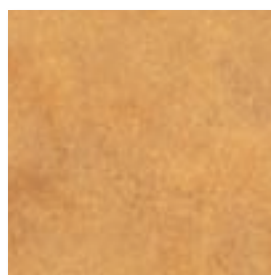
 Comfort	<b>19dB</b>	 Comfort	<b>18dB</b>	<b>Protecsol®</b>	<b>Sanosol®</b>	 100% recyclable
---	-------------	---	-------------	-------------------	-----------------	---



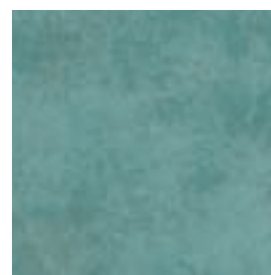
0466 Mastic



0470 Chanvre



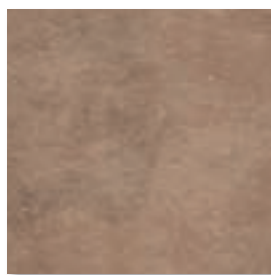
0471 Ocre



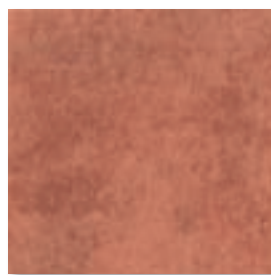
0462 Amande



0465 Ciment



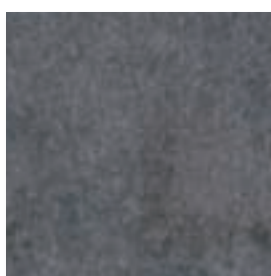
0469 Camel



0463 Safran



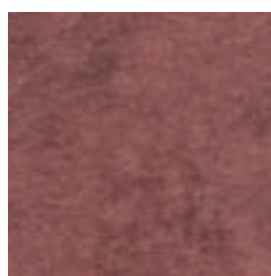
0461 Bleu Acier



0464 Ardoise




0468 Chocolat



0467 Rouille



0460 Cobalt

 : Some references also available in Tarastep p. 90

# MULTILAYERED FLOORING

## TARALAY INITIAL COMFORT



# PACIFICA



19dB

Protecsol®

Sanosol®

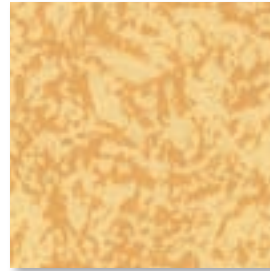
100% recyclable



0551 Cap Horn



0553 Nautic



0569 Beach



0550 Cruise



0554 Wave



0568 Shell



0565 Regate



0555 Gulf



0566 Coast



0561 Salt



0552 Seagull



0564 Flag



0562 Mast



0560 Boat



0563 Stream

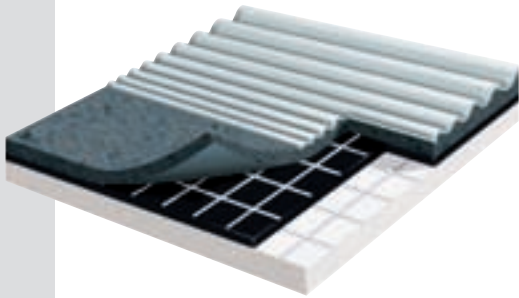




# MULTILAYERED FLOORING

## TARASTEP

### ▶ TARASTEP PREMIUM - Costa Rica

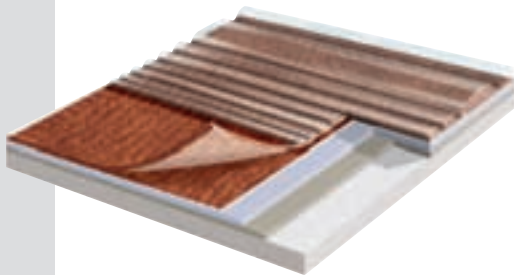


TARASTEP PREMIUM is a multilayered calendared and pressed acoustic staircovering yielding a 17 dB sound insulation.

It is an all-in-one staircovering incorporating the stair tread, a ribbed nosing in a tonal colour, a stair riser.

TARASTEP PREMIUM incorporates Sanosol®, a fungistatic and bacteriostatic treatment.

### ▶ TARASTEP - Strada

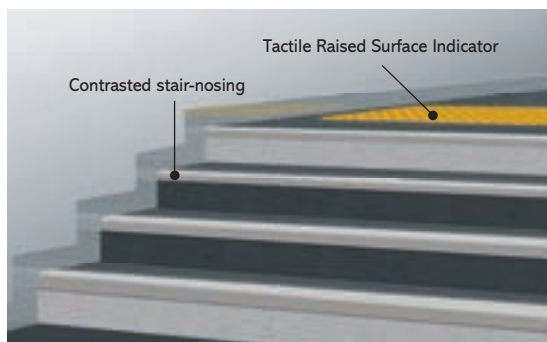


TARASTEP is a multilayered and foam backed complete step with a thickness of 0.85 mm. It comprises a printed design, a Vinyl transparent wear layer and a specific embossing on stair nosing for safety. It is an all-in-one staircovering comprising the stair tread, a ribbed nosing in a contrasted colour and the stair riser.

TARASTEP incorporates Sanosol®, a fungistatic and bacteriostatic treatment to prevent contamination.

TARASTEP provides high sound insulation (18 dB).

### ▶ ACCESS FOR ALL



Further details, please refer to page 252.



# TARASTEP



Sanosol®



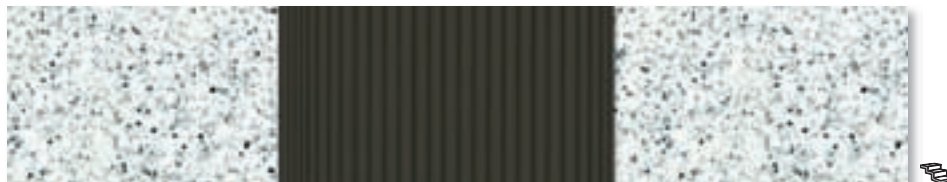
			TARASTEP PREMIUM	TARASTEP
<b>DESCRIPTION</b>				
Total thickness	EN 428	mm	3.30	3.85
Thickness of wearlayer	EN 429	mm	1.00	0.85
Weight	EN 430	g/m <sup>2</sup>	3320	3340
Width of sheet	EN 426	cm	100	101
Length of sheet	EN 426	lm	22	22
<b>CLASSIFICATION</b>				
Norm / Product specification	-	-	EN 651	EN 651
European classification	EN 685	class	34-42	34-42
Fire rating	EN 13501-1	class	Cfl-s1	Cfl-s1
Static electrical propensity	EN 1815	kV	2	< 2
Slip resistance wet	DIN 51 130	class	-	R10
<b>PERFORMANCES</b>				
Wear resistance	EN 660.2	mm <sup>3</sup>	≤ 2.0	≤ 2.0
Wear group	EN 651	group	T	T
Dimensional stability	EN 434	%	≤ 0.40	≤ 0.40
Residual indentation (requirement)	EN 433	mm	≤ 0.20	≤ 0.20
Residual indentation (value)	-	-	0.10	0.13
Impact sound insulation	EN ISO 717-2	dB	17	18
Thermal conductivity	EN 12 524	W/(m.k)	0.25	0.25
Colour fastness	EN 20 105 - B02	degree	≥ 6	≥ 6
Chemical product resistance	EN 423	-	OK	OK
Fungistatic & bacteriostatic treatment	-	-	Sanosol®	Sanosol®
<b>CE MARKING</b>				
CE	EN 14041			

# MULTILAYERED FLOORING

## TARASTEP PREMIUM - COSTA RICA



NORM AS/NZS/428 : 4 : 2002  
(AUSTRALIAN STANDARD)



4743 Nublo



8387 Balsa



8395 Caballo



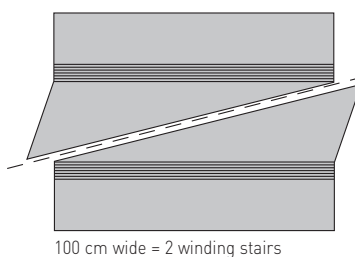
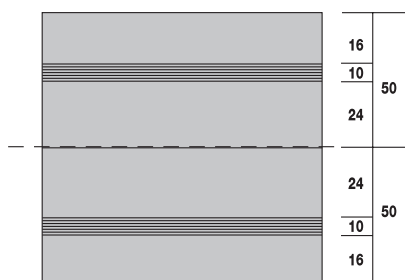
8167 Papagayo



4456 Marina



4746 Jaguar



Finitions en fond de marche : se référer aux pages accessoires et finition  
Ces matériaux sont présentés en développé de 100 cm (schémas ci-contre) pour recouvrir deux marches balancées ou pour recouvrir deux marches droites. En bord de marche, deux finitions sont possibles :  
- Clip marche (baguette de finition clipsée).  
- Soudure à froid.

Please contact our Technical Department.

# TARASTEP - STRADA



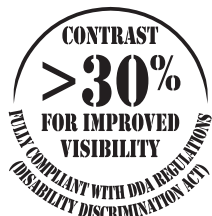
Comfort

18dB

Sanosol®



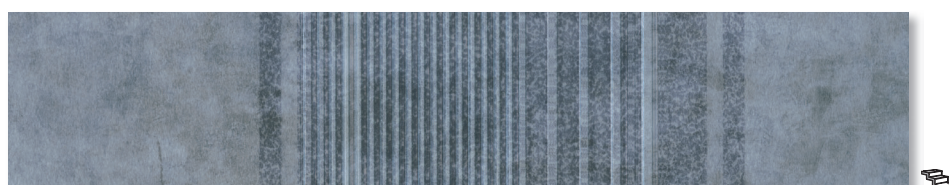
100% recyclable



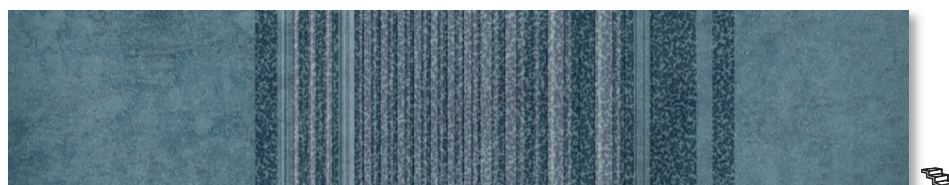
NORM AS/NZS/428:4:2002  
(AUSTRALIAN STANDARD)



0466 Mastic



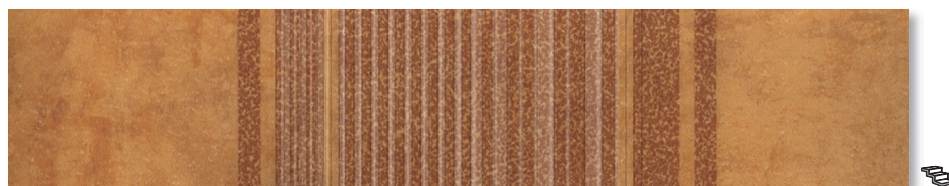
0465 Ciment



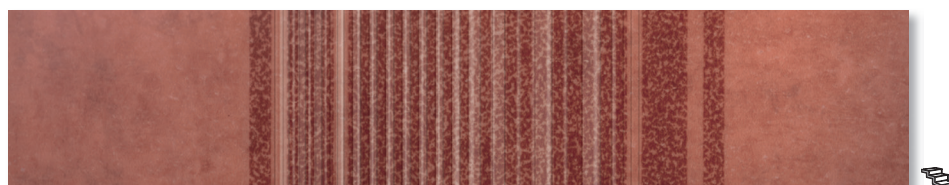
0461 Bleu Acier



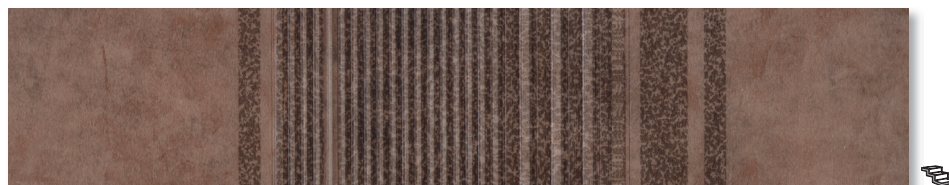
0470 Chanvre



0471 Ocre



0463 Safran



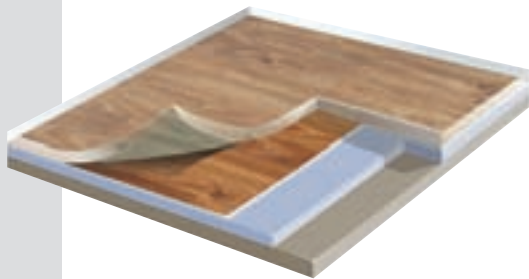
0469 Camel



# MULTILAYERED FLOORING

## NERA CONTRACT

### ▶ NERA CONTRACT WOOD



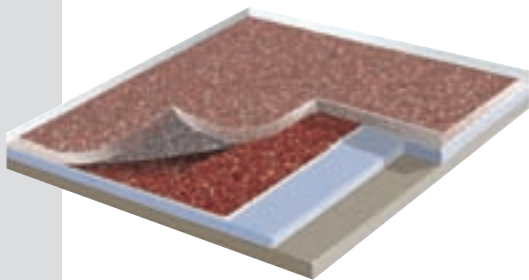
NERA CONTRACT WOOD is a multilayered vinyl floorcovering, available in 2 m & 4 m wide sheets.

The product comprises a compacted underlayer reinforced with glass fibre and a printed wood design that is protected by a transparent wood grain embossed wearlayer.

NERA CONTRACT WOOD is treated with a polyurethane treatment (PUR) that facilitates ease of maintenance and eliminates the use of acrylic emulsion after installation.

NERA CONTRACT WOOD has anti-static properties (AS Class 1), may be decontaminated (in particular radio activity). It is Sanosol® treated to prevent bacterial and fungal growth.

### ▶ NERA CONTRACT PIXEL



NERA CONTRACT PIXEL is a multilayered vinyl floorcovering, available in 2 m & 4 m wide sheets.

The product comprises a compacted underlayer reinforced with glass fibre and a printed all-over design that is protected by a transparent wearlayer.

NERA CONTRACT PIXEL is treated with a polyurethane treatment (PUR) that facilitates ease of maintenance and eliminates the use of acrylic emulsion after installation.

NERA CONTRACT PIXEL has anti-static properties (AS Class 1), may be decontaminated (in particular radio activity). It is Sanosol® treated to prevent bacterial and fungal growth.

# NERA CONTRACT

 <b>2/4 M</b>	<b>Sanosol®</b>	<b>PUR</b>	 <b>100% recyclable</b>
--	-----------------	------------	--

## NERA CONTRACT WOOD & PIXEL

highly recommended for heavy traffic areas: shops, offices, schools, hospitals,...

- ▶ Foam backed floorcovering: sound insulation.
- ▶ 2m and 4m wide.
- ▶ Polyurethane surface treatment PUR: ease of maintenance.
- ▶ Fungistatic and bacteriostatic treatment Sanosol®: hygiene.

### NERA CONTRACT WOOD & PIXEL

#### DESCRIPTION

Total thickness	EN 428	mm	2.25
Thickness of wearlayer	EN 429	mm	0.70
Weight	EN 430	g/m <sup>2</sup>	2815
Width of sheet	EN 426	cm	200 / 400
Length of sheet	EN 426	lm	20

#### CLASSIFICATION

Norm / Product specification	-	-	EN 649
European classification	EN 685	class	34-43
Fire rating	EN 13501-1	class	Bfl-s1
Static electrical propensity	EN 1815	kV	< 2
Slip resistance wet	DIN 51 130	class	R10

#### PERFORMANCES

Wear resistance	EN 660.2	mm <sup>3</sup>	≤ 2.0
Wear group	EN 649	group	T
Dimensional stability	EN 434	%	≤ 0.40
Residual indentation (requirement)	EN 433	mm	≤ 0.10
Residual indentation (value)	-	mm	≈ 0.05
Impact sound insulation	EN ISO 717-2	dB	5
Thermal conductivity	EN 12 524	W/(m.k)	0.25
Colour fastness	EN 20 105 - B02	degree	≥ 6
Chemical product resistance	EN 423	-	OK
Fungistatic & bacteriostatic treatment	-	-	Sanosol®
Surface treatment	-	-	PUR

#### CE MARKING

	EN 14041	  
		

# MULTILAYERED FLOORING

## NERA CONTRACT



1314 Walnut Brown



0585 Saturne Perou



1313 Lounge Chic



0587 Saturne Cherry



1311 Wengue Safari

# WOOD

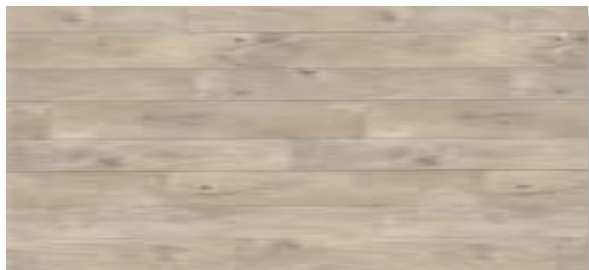


2/4 M

PUR



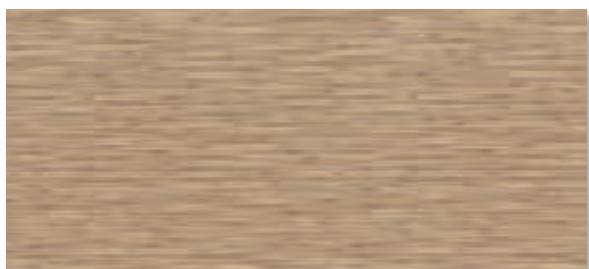
100% recyclable



1312 Mambo Ash



0590 Ontario Maple



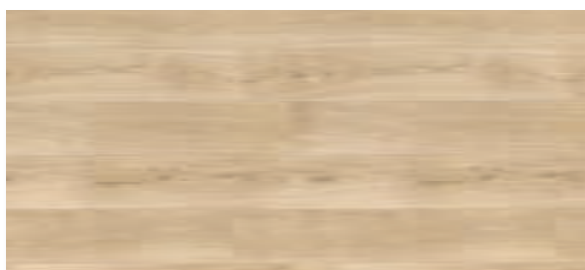
1200 Bamboo Tea



0593 Oregon Natural



1309 Noma Rustic



1302 Blade Clear



0583 Cadix Gold



0592 Ottawa Poplar



0594 Dakota Autumn



1310 Sycomore Golden



# MULTILAYERED FLOORING

NERA CONTRACT



# PIXEL



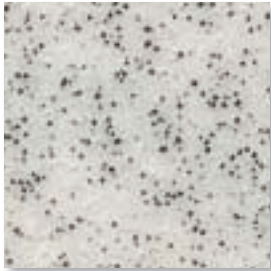
2/4 M

Sanosol®

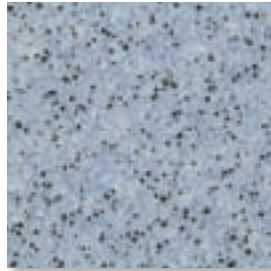
PUR



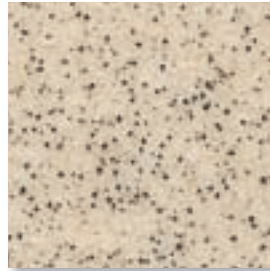
100% recyclable



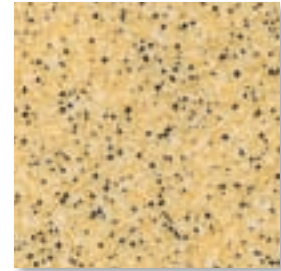
0629 Snow



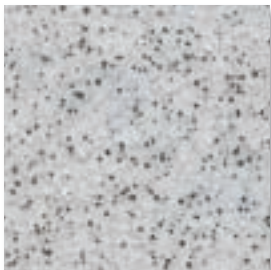
0625 Agathe



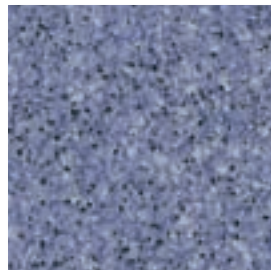
0639 Sand



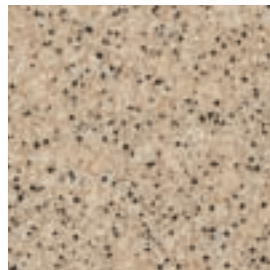
0621 Vanilla



0630 Fog



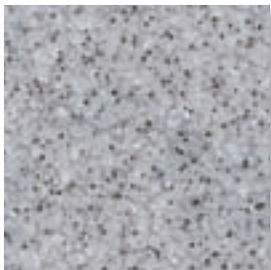
0626 Lavanda



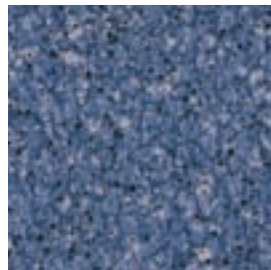
0638 Nougat



0636 Biscuit



0597 Silver



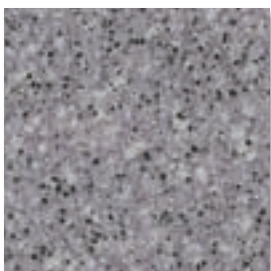
0627 Indigo



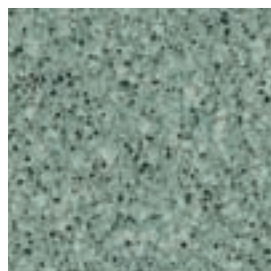
0637 Sahara



0635 Pecan



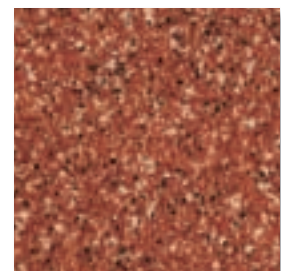
0631 Storm



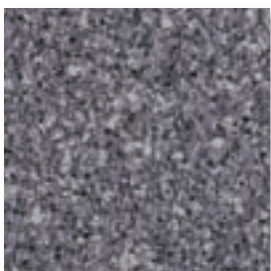
0623 Kiwi



0624 Anise



0634 Safran



0632 Anthracite

# MULTILAYERED FLOORING

## NERA CLASSIC

### ▶ NERA CLASSIC



NERA CLASSIC is a multilayered vinyl floorcovering, available in 2m and 4m wide sheets.

The product comprises a compacted underlayer reinforced with glass fibre grid and a printed design that is protected by a transparent wearlayer.

The product is treated with a polyurethane treatment (PUR) which facilitates ease of maintenance and eliminates the use of acrylic emulsion after installation.

The product has anti-static properties (AS Class 1), may be decontaminated (in particular radio activity) and is treated Sanosol® to prevent bacterial and fungal growth.

# NERA CLASSIC

 <b>2/4 M</b>	<b>Sanosol®</b>	<b>PUR</b>	 <b>100% recyclable</b>
--	-----------------	------------	--

- ▶ **Highly durable:** group T abrasion rating - K5 wear rating
- ▶ **Easy maintenance:** PUR surface treatment
- ▶ **Hygiene:** fungistatic and bacteriostatic treatment Sanosol®
- ▶ **Highly recommended** for medium traffic areas

## NERA CLASSIC

### DESCRIPTION

Total thickness	EN 428	mm	2.20
Thickness of wearlayer	EN 429	mm	0.55
Weight	EN 430	g/m <sup>2</sup>	2425
Width of sheet	EN 426	cm	200 / 400
Length of sheet	EN 426	lm	20


### CLASSIFICATION

Norm / Product specification	-	-	EN 653
European classification	EN 685	class	33-42
Fire rating	EN 13501-1	class	Bfl-s1
Static electrical propensity	EN 1815	kV	< 2

### PERFORMANCES

Wear resistance	EN 660.2	mm <sup>3</sup>	≤ 2.0
Wear group	EN 649	group	T
Dimensional stability	EN 434	%	≤ 0.40
Residual indentation (requirement)	EN 433	mm	≤ 0.10
Residual indentation (value)	-	mm	≈ 0.05
Impact sound insulation	EN ISO 717-2	dB	8
Thermal conductivity	EN 12 524	W/(m.k)	0.25
Colour fastness	EN 20 105 - B02	degree	≥ 6
Chemical product resistance	EN 423	-	OK
Fungistatic & bacteriostatic treatment	-	-	Sanosol®
Surface treatment	-	-	PUR

### CE MARKING

	EN 14041	  
		

# MULTILAYERED FLOORING

## NERA CLASSIC



# NERA CLASSIC

 <b>2/4 M</b>	<b>Sanosol®</b>	<b>PUR</b>	 <b>100% recyclable</b>
--	-----------------	------------	--

## Wood



0401 Manitoba Peuplier



0411 Beech Natural



0412 Maple Forest



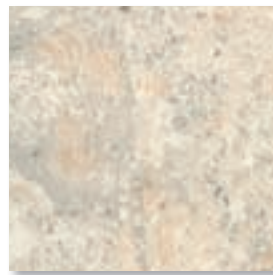
0080 Turku Clear



## Roma



0019 Roma Nuage



0083 Roma Cream



0084 Roma Light Grey



## Gravel



0087 Gravel Natural



0088 Gravel Emeraude



0089 Gravel Mineral

