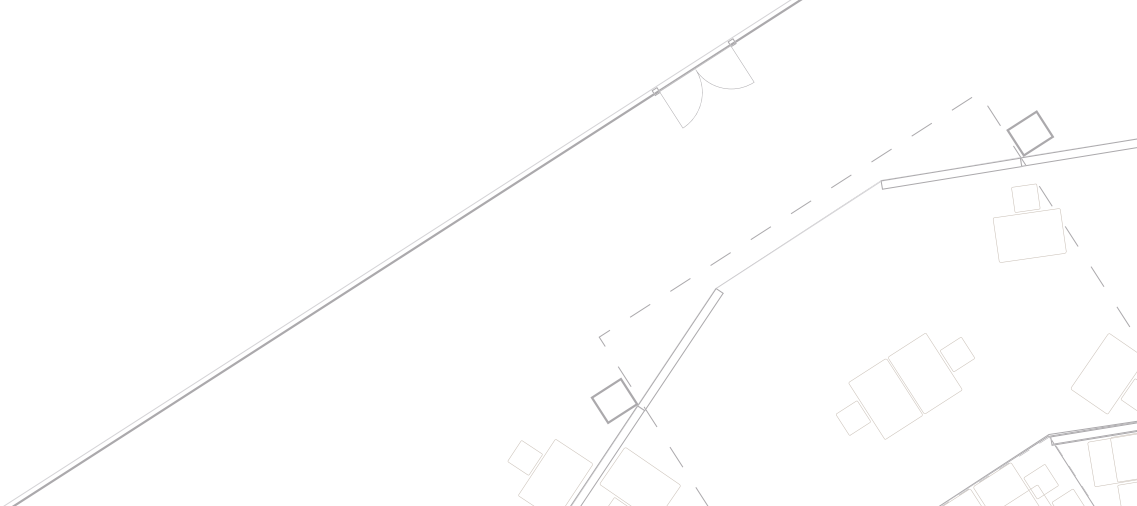


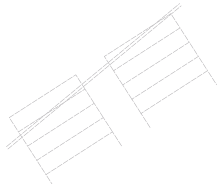
**DEBUT PAGE SUIVANTE**  
*BEGINNING WITH THE FOLLOWING PAGE*

**merci d'utiliser les feuilles de styles**  
*please use the style sheets*





Speciality flooring



## SPECIALITY FLOORING



# SPECIALITY FLOORING

## Dissipative Flooring

Dissipative &  
Conductive Flooring

EN 1081 ( $\Omega$ ):  $10^6 \leq R_t \leq 10^8$



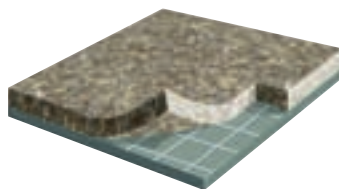
Mipolam Accord EL7



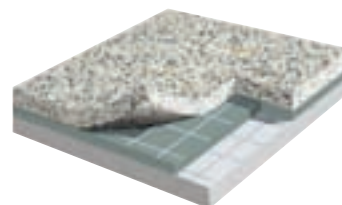
Mipolam Robust EL7

## SparClean® Treatment

Slip Resistant  
Flooring



Tarasafe Geo / Tarasafe Ultra  
Tarasafe Style / Tarasafe Uni



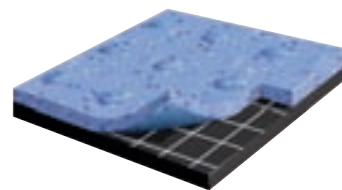
Tarasafe Ultra Comfort

## Floorcovering

Shower System

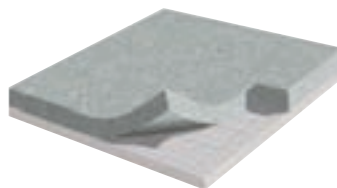


Elegance SD



Brazilia SD

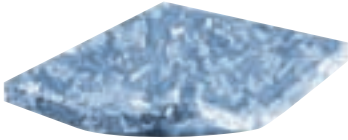
Wall Covering



Mural Ultra

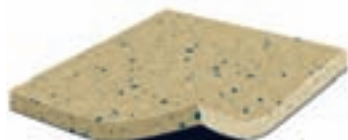
## Conductive Flooring

EN 1081 ( $\Omega$ ):  $5 \times 10^4 \leq R_t \leq 10^6$

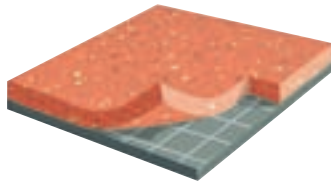


Mipolam Technic EL5

EN 1081 ( $\Omega$ ):  $10^4 \leq R_t \leq 10^6$

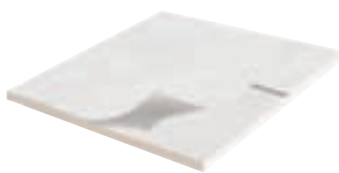


Mipolam Elegance EL5

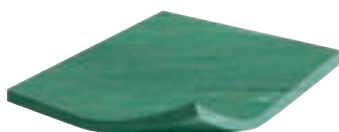


Tarasafe Standard  
Tarasafe Elements  
Tarasafe Super & Plus

## Wall Covering



Shower Mural Covering



Mural Club

## SPECIALITY FLOORING AND WALLCOVERING 158 - 183

### Static control flooring 162 - 167

- Mipolam Robust EL 7 165
- Mipolam Accord EL7 165
- Mipolam Technic EL5 167
- Mipolam Elegance EL5 167

### Safety flooring 168 - 177

- Tarasafe Geo SparClean® 171
- Tarasafe Ultra & Ultra Comfort SparClean® 173
- Tarasafe Uni SparClean® 175
- Tarasafe Style SparClean® 175
- Tarasafe Elements 176
- Tarasafe Standard/ Plus/Super 177

### Shower System 178 - 181

### Wall covering 182 - 183

- Mural Ultra 183
- Mural Club 183

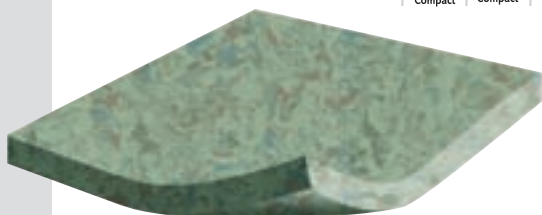
# SPECIALITY FLOORING

## MIPOLAM EL

### Dissipative flooring

#### ▶ MIPOLAM ACCORD EL7 - MIPOLAM ROBUST EL7

MIPOLAM ACCORD EL7



MIPOLAM ROBUST EL7



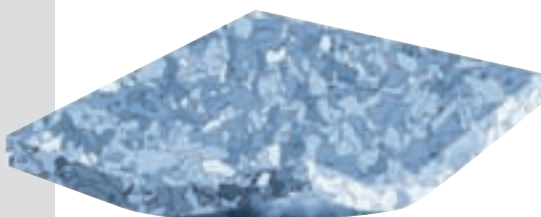
$10^6 \leq Rt \leq 10^8 \Omega$  100% recyclable

MIPOLAM ROBUST EL7 and MIPOLAM ACCORD EL7 are dissipative, antistatic (< 2 kV), flexible homogeneous floorcoverings available in both sheet and tile form. Calendered and compacted with permanent antistatic properties.

They act as a continuous dissipater  $10^6 \leq Rt \leq 10^8$  (EN 1081) and comply with EN 649.

### Conductive flooring

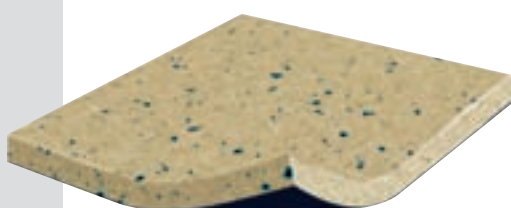
#### ▶ MIPOLAM TECHNIC EL5



MIPOLAM TECHNIC EL5 is a static-conductive, flexible homogeneous vinyl floorcovering with an electrical resistance of  $5 \times 10^4 \leq Rt \leq 10^6$  (EN 1081), available in tiles. The conductive carbon coated Vinyl pellets create the permanent static-conductive properties.

It complies with EN 649.

#### ▶ MIPOLAM ELEGANCE EL5



MIPOLAM ELEGANCE EL5 is a Vinyl conductive flooring according to European Standard 1081 ( $10^4 \leq Rt \leq 10^6$ ) and is available in 2m wide rolls. It is a 2mm homogeneous product incorporating encapsulated granules throughout the thickness of the product and a conductive backing to ensure optimal and constant conductive properties throughout the product's full life expectancy.

The product has excellent resistance to static and rolling loads (the flooring is classified 34-43 according to European Standard).

# MIPOLAM EL



A complete range for Hi-tech applications: electronics and telecommunication areas, computer rooms, operating theatres, radiology...

- ▶ Compacted floorcovering for better hygiene, maintenance, and traffic resistance.
- ▶ Available in tiles and sheets with specific formats especially adapted to raised floors (608 x 608 mm).

			MIPOLAM ROBUST EL7	MIPOLAM ACCORD EL7	MIPOLAM TECHNIC EL5	MIPOLAM ELEGANCE EL5
<b>DESCRIPTION</b>						
Total thickness	EN 428	mm	2	2	2	2
Weight	EN 430	g/m <sup>2</sup>	3300	3100	3440	3060
Width of sheet	EN 426	cm	200	200	-	200
Length of sheet	EN 426	lm	20	20	-	20
Tile size	EN 427	mm	608 x 608	608 x 608	608 x 608	-
Number of tiles per package	-	-	20	20	20	-

<b>CLASSIFICATION</b>						
Norm / Product specification	-	-	EN 649	EN 649	EN 649	EN 649
European classification	EN 685	class	34-43	34-43	34-43	34-43
Fire rating	EN 13501-1	class	Bfl-s1	Bfl-s1	Bfl-s1	Bfl-s1
Electrical resistance	EN 1081 <sup>(1)</sup> IEC 61340-5-1 ANSI / ESD 7.1	$\Omega$	$10^6 \leq Rt \leq 10^8$ $10^6 \leq Rt \leq 10^9$ $10^6 \leq Rt \leq 10^8$	$10^6 \leq Rt \leq 10^8$ $10^6 \leq Rt \leq 10^9$ $10^6 \leq Rt \leq 10^8$	$5 \times 10^4 \leq Rt \leq 10^6$ $Rt \leq 10^8$ $2.5 \times 10^4 \leq Rt \leq 10^6$	$10^4 \leq Rt \leq 10^6$ $Rt \leq 10^8$ $2.5 \times 10^4 \leq Rt \leq 10^6$
Static electrical propensity	EN 1815 IEC 61340-4-5	kV V	< 2 < 100	< 2 < 100	< 2 < 20*	< 2 < 20*
Slip resistance wet	DIN 51 130	class	-	-	R9	R9

<b>PERFORMANCE</b>						
Wear resistance	EN 660.2	mm <sup>3</sup>	$\leq 7.5$	$\leq 4.0$	$\leq 4.0$	$\leq 4.0$
Wear group	EN 649	group	M	P	P	P
Dimensional stability	EN 434	%	Sheet $\leq 0.40$ Tile $\leq 0.25$	Sheet $\leq 0.40$ Tile $\leq 0.25$	Tile $\leq 0.25$	Sheet $\leq 0.40$
Residual indentation	EN 433	mm	$\approx 0.03$	$\approx 0.03$	$\approx 0.03$	$\approx 0.03$
Thermal conductivity	EN 12 524	W/(m.k)	0.25	0.25	0.25	0.25
Colour fastness	EN 20 105 - B02	degree	$\geq 6$	$\geq 6$	$\geq 6$	$\geq 6$
Chemical product resistance	EN 423	class	Good	Good	Good	Good
Fungistatic & bacteriostatic	EN ISO 846	-	OK	OK	OK	OK

<b>CE MARKING</b>						
CE	EN 14041					

(1) Measured with conductive ABEBA shoes  
\* Measure before installation

# SPECIALITY FLOORING

MIPOLAM EL





# ROBUST EL7 - ACCORD EL7

## MIPOLAM ROBUST EL7



**M**
 $10^6 \leq Rt \leq 10^8 \Omega$ 
 100% recyclable



0002 Platinum



0112 Storm



0003 Ivory



0004 Clay



0005 Steel



0306 Green



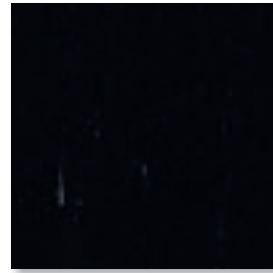
0006 Honey



0013 Pewter



0103 White

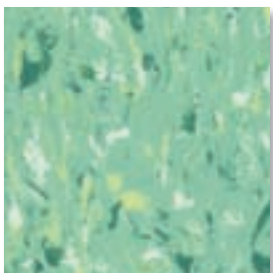


0102 Black

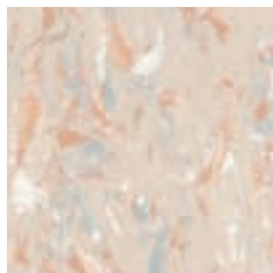
## MIPOLAM ACCORD EL7



**P**
 $10^6 \leq Rt \leq 10^8 \Omega$ 
 100% recyclable



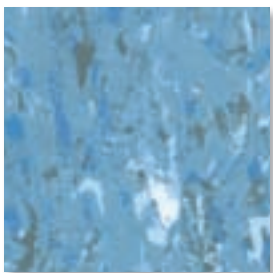
3117 Ladoga



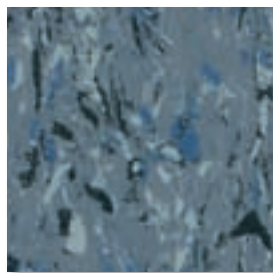
3113 Manitoba



3101 Louise



3116 Mälaren



3159 Michigan



3111 Huron

# SPECIALITY FLOORING

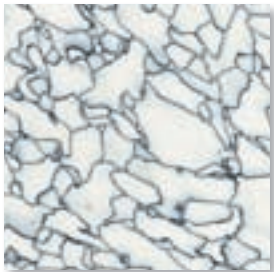
MIPOLAM EL



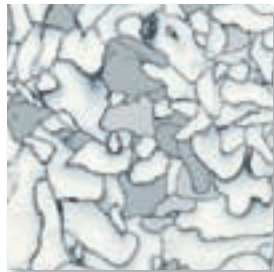
# TECHNIC EL5 - ELEGANCE EL5

## MIPOLAM TECHNIC EL5

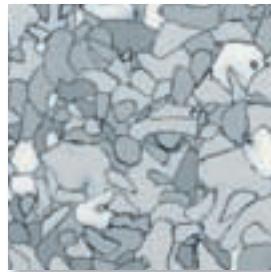

**P**
 $5 \times 10^4 \leq Rt \leq 10^6 \Omega$ 
 100% recyclable



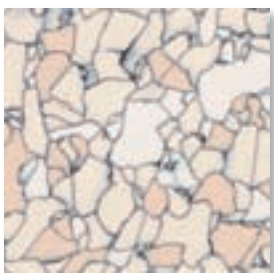
0200 Blanc



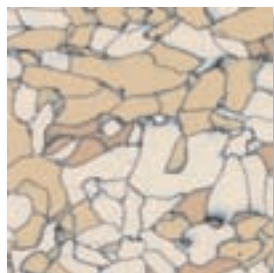
0701 Ariane



0723 Narro



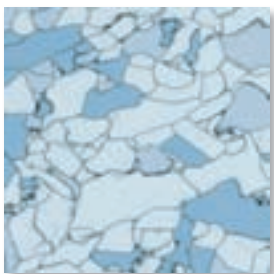
0785 Levanto



0783 Pluto



0784 Sirocco



0786 Aquilo



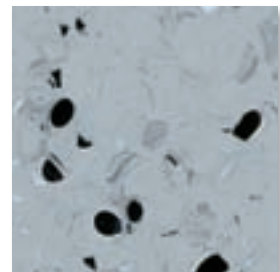
0779 Jeano



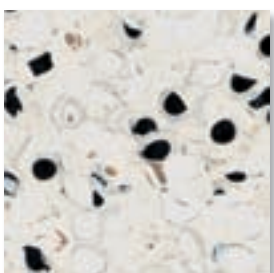
0780 Michaelo

## MIPOLAM ELEGANCE EL5

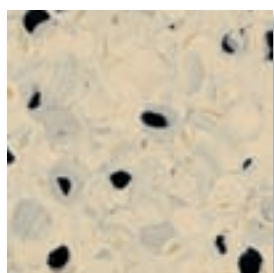

**P**
 $10^4 \leq Rt \leq 10^6 \Omega$ 
 100% recyclable



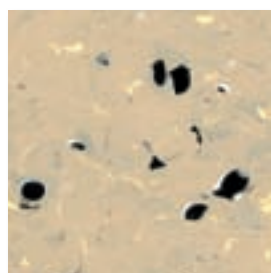
0133 Arcturus



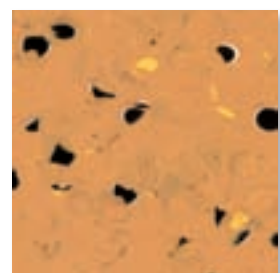
0131 Rigel



0136 Vega



0138 Procyon

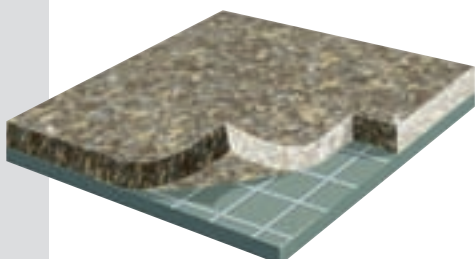


0152 Deneb

# SPECIALITY FLOORING

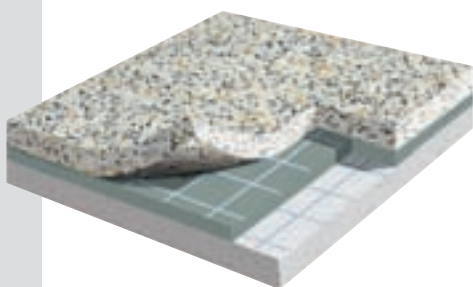
## TARASAFE

### ▶ TARASAFE GEO, ULTRA, UNI, STYLE: TREATED



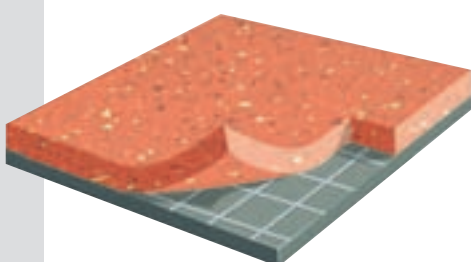
TARASAFE ULTRA, STYLE, UNI & GEO are slip resistant vinyl floorcoverings, with a pure PVC wear layer and deeply inlaid mineral crystal particles (patent pending) and coloured chips for a decorative design. They are re-inforced with a glass fibre grid in a sheet form. They are treated with Sanosol® fungistatic and bacteriostatic additives and with SparClean® surface treatment, a low maintenance cost effective solution providing extreme resistance from soiling and staining. They are an ideal solution for heavy traffic applications where enhanced slip resistance, durability, hygiene and easy maintenance are required. Tarasafe is suitable for most commercial and industrial areas, with a 12 years warranty and is 100% recyclable.

### ▶ TARASAFE ULTRA COMFORT: TREATED



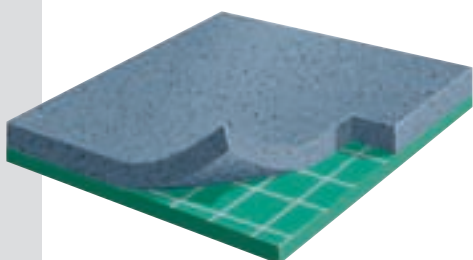
TARASAFE ULTRA COMFORT is a slip resistant vinyl floorcovering, with a pure PVC wear layer and deeply inlaid mineral crystal particles (patent pending) and coloured chips for a decorative design. It is re-inforced with a glass fibre grid in a sheet form. It is treated with Sanosol® fungistatic and bacteriostatic additives and with SparClean® surface treatment, a low maintenance cost effective solution providing extreme resistance from soiling and staining. It is an ideal solution for heavy traffic applications where enhanced slip resistance, durability, hygiene and easy maintenance are required. Tarasafe is suitable for most commercial and industrial areas, with a 12 years warranty and is 100% recyclable. TARASAFE ULTRA COMFORT has a VHD closed cell foam backing: sound insulation: 16dB.

### ▶ TARASAFE ELEMENTS, STANDARD: NON TREATED



TARASAFE STANDARD, ELEMENTS are slip resistant vinyl floorcoverings, with a pure PVC wear layer and deeply inlaid mineral crystal particles (patent pending). They are re-inforced with a glass fibre grid in a sheet form. They are treated with Sanosol® fungistatic and bacteriostatic additives. They are an ideal solution for heavy traffic applications where enhanced slip resistance, durability, hygiene and easy maintenance are required. Tarasafe is suitable for most commercial and industrial areas, with a 12 years warranty and is 100% recyclable.

### ▶ TARASAFE SUPER, PLUS: NON TREATED



TARASAFE PLUS and TARASAFE SUPER are slip resistant vinyl floorcoverings constructed from vinyl incorporating glass particles reinforced with a glass fibre grid and available in sheet form. TARASAFE PLUS comprises a textile backing for better adherence in wet areas. It helps reducing telegraphing. TARASAFE PLUS has a thickness of 2.5 mm and TARASAFE SUPER has a thickness of 2.2 mm for an extended durability. The inclusion of glass particles into the vinyl provides excellent slip resistance. The joints are hot-welded to ensure perfect water-tightness. TARASAFE PLUS and TARASAFE SUPER are treated with Sanosol® a fungistatic and bacteriostatic treatment and are suitable for use in all areas of heavy traffic where slip resistance, durability and hygienic conditions are required.

# TARASAFE

 Compact	 Comfort	<b>K5</b>	<b>R10</b>	<b>R11</b>	<b>R12</b>	<b>SparClean®</b>	<b>Sanosol®</b>
---	---	-----------	------------	------------	------------	-------------------	-----------------








- ▶ **100 % recyclable:** brand new Safety flooring solution, using recycled and recyclable material
- ▶ **Easy to clean and maintain:** due to a compacted non porous surface made of pure vinyl content
- ▶ **Permanent Slip resistance:** dense concentration of deep inlaid mineral crystal particles throughout the wear layer
- ▶ **Enhanced colour, design and brightness:** due to the use of mineral crystal particles
- ▶ **Highest abrasion rating:** pure vinyl content (no filler content)
- ▶ **Maximum hygiene:** Sanosol® bacteriostatic and fungistatic treatment
- ▶ **Indoor Air Quality:** low VOC emission

	TARASAFE UNI	TARASAFE GEO	TARASAFE STYLE	TARASAFE ULTRA	TARASAFE ULTRA COMFORT	TARASAFE ELEMENTS	TARASAFE STANDARD	TARASAFE SUPER	TARASAFE PLUS
--	-----------------	-----------------	-------------------	-------------------	------------------------------	----------------------	----------------------	-------------------	------------------

DESCRIPTION									
Total thickness	EN 428	mm	2.0			3.2	2.0	2.2	2.5
Thickness of wearlayer	EN 429	mm	0.91	1.15	1.21	1.16	1.13	0.74	1.12
Weight	EN 430	g/m <sup>2</sup>	2600	2500	2620	2610	3080	2590	2210
Width/Length of sheet	EN 426	cm/ml	200/20			200/20	200/20	200/20	200/20

CLASSIFICATION									
Norm/Product specification	EN 649/ EN 651	-	EN 649			EN 651	EN 649	EN 649	
European classification	EN 685	class	34-43			34-43	34-43	34-43	
K rating	class	-	K5			K5	K5	K5	
Fire rating	EN 13501-1	class	B <sub>fl</sub> -s1			C <sub>fl</sub> -s1	B <sub>fl</sub> -s1	B <sub>fl</sub> -s1	
Static electrical propensity	EN 1815	kV	<2			<2	<2	<2	
Slip resistance wet - ramp test with oil	DIN 51130	class	R10			R11	R10	R12	R10

PERFORMANCES									
Wear resistance	EN 660.2	mm <sup>3</sup>	≤2			≤2	≤2	≤2	
Wear group	EN 651	-	T			T	T	T	
Dimensional stability	EN 434	%	≤0.40			≤0.40	≤0.40	≤0.40	
Residual indentation: exigency	EN 433	mm	≤0.10			≤0.20	≤0.10	≤0.10	
Impact sound Insulation	EN ISO 717-2	dB	-			16	-	-	
Thermal conductivity	EN 12 524	W/(m.K)	0.25			0.25	0.25	0.25	
Colour fastness	EN 20 105- B02	degree	≥6			≥6	≥6	≥6	
Chemical products resistance	EN 423	-	Good			Good	Good	Good	
Fungistatic and bacteriostatic treatment	-	-	Sanosol®			Sanosol®	Sanosol®	Sanosol®	
Surface treatment			SparClean®			SparClean®	-	-	

CE MARKING									
CE	EN 14041								
									

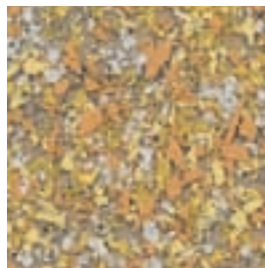
# SPECIALITY FLOORING

## TARASAFE GEO

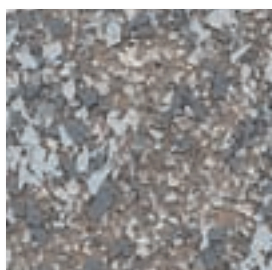


# TARASAFE GEO

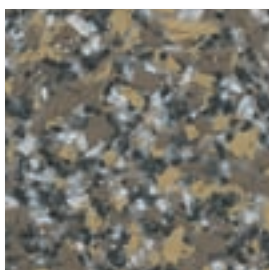
 <b>2m</b>	<b>R 10</b>	<b>K5</b>	<b>SparClean®</b>	<b>Sanosol®</b>
---	-------------	-----------	-------------------	-----------------



8326 Starburst



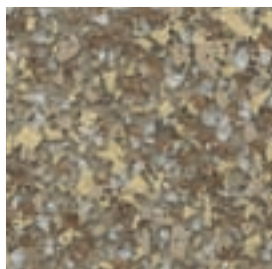
4784 Artic



4317 Delta



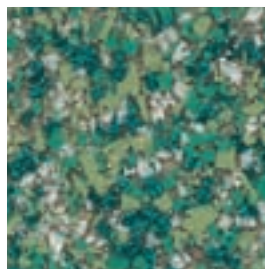
4108 Sunset



4316 Salt Lake



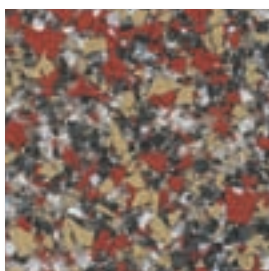
8599 Camouflage



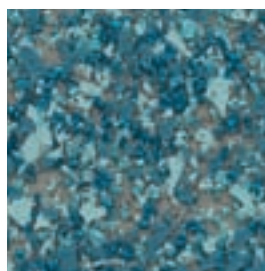
4503 Rainforest



4320 Tundra



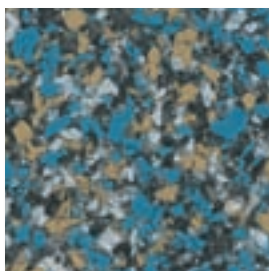
4106 Lava



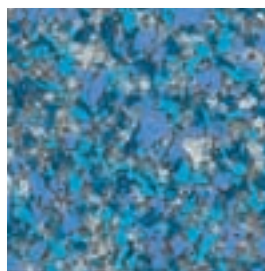
4459 Oceanic



4788 Alpine



4445 Meteor



4447 Glacier Blue

# SPECIALITY FLOORING

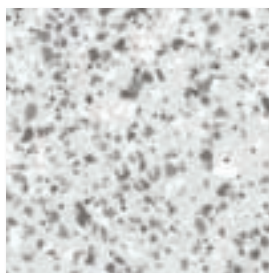
## TARASAFE ULTRA



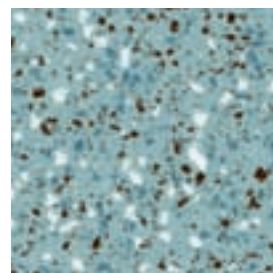


# TARASAFE ULTRA & TARASAFE ULTRA COMFORT

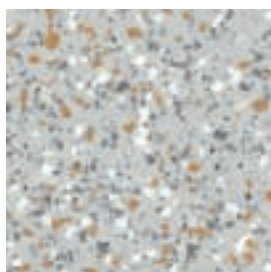
 2m	 2m	R 10	R 11*	K5	SparClean®	Sanosol®
--	--	------	-------	----	------------	----------



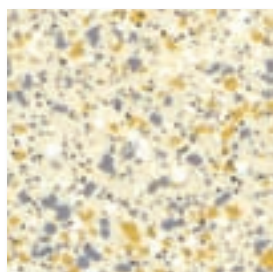
8701 Opal



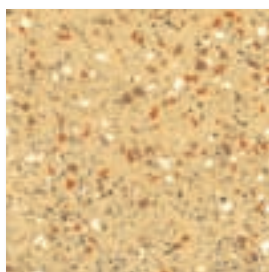
4463 Aqua



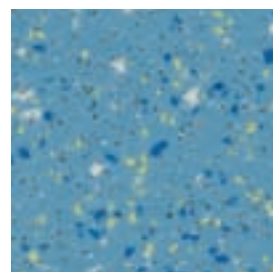
8704 Pebble



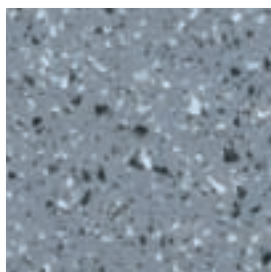
7383 Diopside



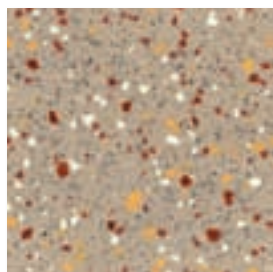
4323 Sandstone



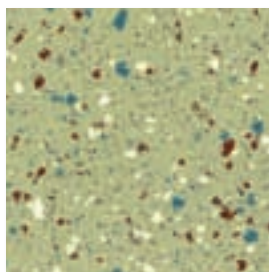
4465 Cobalt



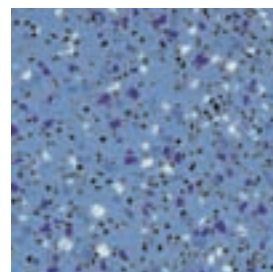
8709 Granite



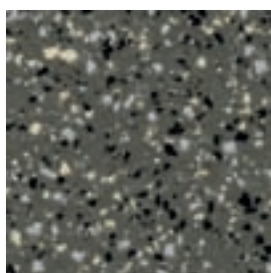
7384 Citrine



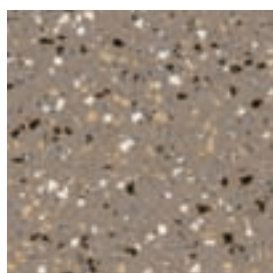
4505 Peridot



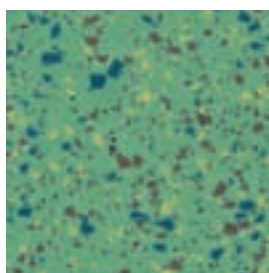
7482 Halite



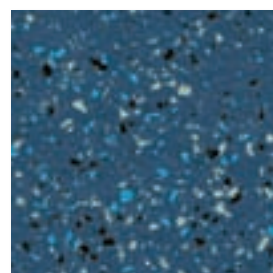
8710 Basalt



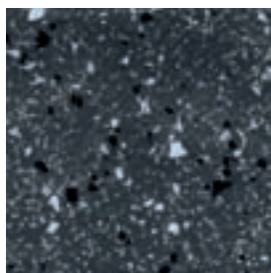
8013 Jasper



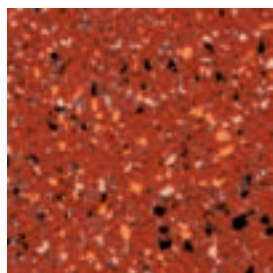
4508 Jade



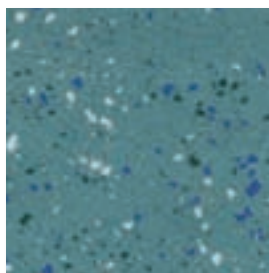
4472 Moonstone



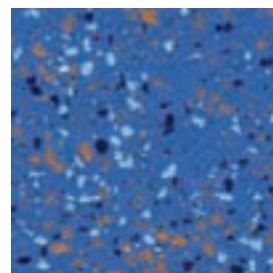
8717 Obsidian



4128 Ruby



4460 Topaz



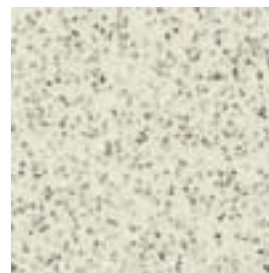
4470 Sapphire

\*R11: Tarasafe Ultra comfort only

# SPECIALITY FLOORING

## TARASAFE UNI

 Compact	2m	R 10	K5	SparClean®	Sanosol®
---	----	------	----	------------	----------



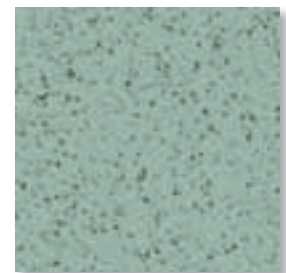
7618 Edelweiss



7386 Savana



7767 Dove Grey



7504 Pastel Green



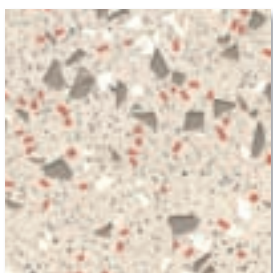
7773 Storm



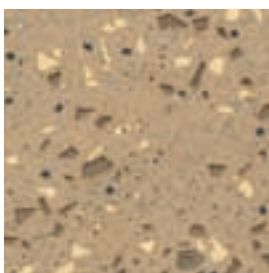
7438 Baleine

# TARASAFE STYLE

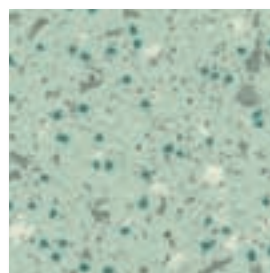

**2m** | **R 10** | **K5** | **SparClean®** | **Sanosol®**



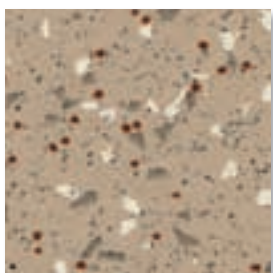
4319 Almond



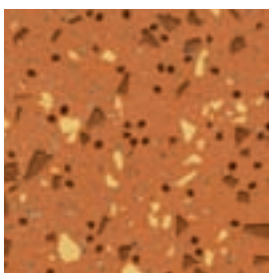
4322 Hazelnut



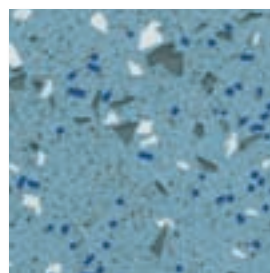
4504 Spearmint



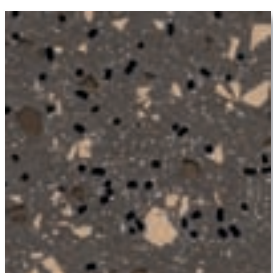
4321 Oatmeal



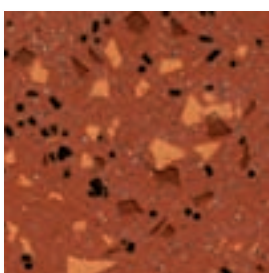
8101 Burnt Orange



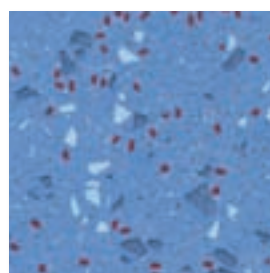
4448 Fresh Water



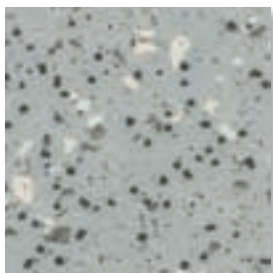
8032 Liquorice



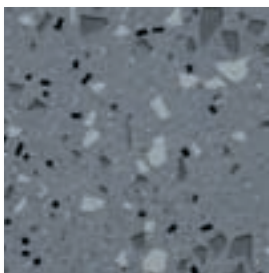
8102 Paprika



4449 Blueberry



4785 Oyster

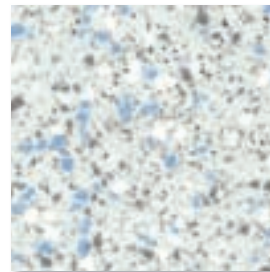


4799 Caviar

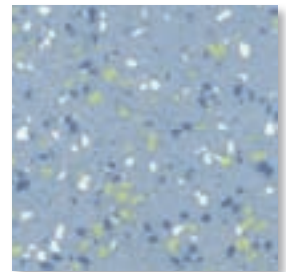
# SPECIALITY FLOORING

## TARASAFE ELEMENTS

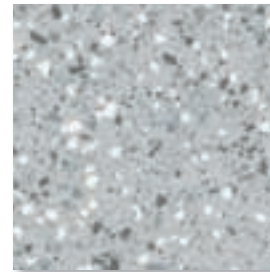
 <b>2m</b>	<b>R 10</b>	<b>K5</b>	<b>Sanosol®</b>
---	-------------	-----------	-----------------



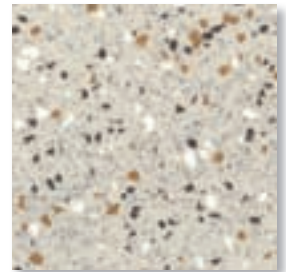
7724 Calcium



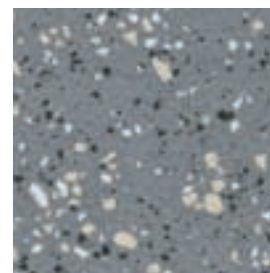
7407 Oxygen Blue



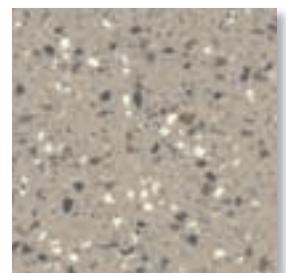
7725 Zinc



7307 Copper



7726 Magnesium



7308 Earth

# TARASAFE STANDARD - PLUS - SUPER

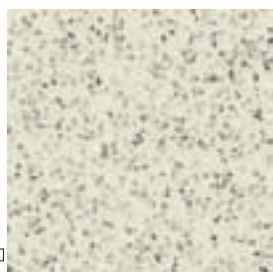
TARASAFE STANDARD	 2m	R 10	K5	Sanosol®
-------------------	--	------	----	----------

TARASAFE PLUS	 2.5mm Compact Textile backing	R 10	K5	Sanosol®
---------------	---	------	----	----------

TARASAFE SUPER	 2m	R 12	K5	Sanosol®
----------------	--	------	----	----------



7731 Marbre<sup>(1)</sup>



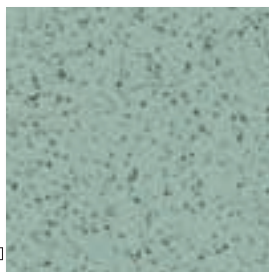
7618 Edelweiss



7767 Dove Grey<sup>(1) (2)</sup>



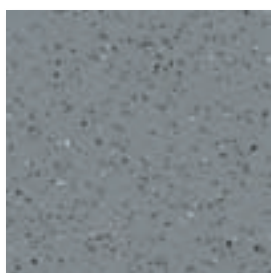
7386 Savana<sup>(1) (2)</sup>



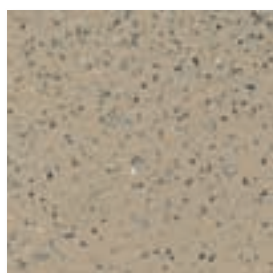
7504 Pastel Green



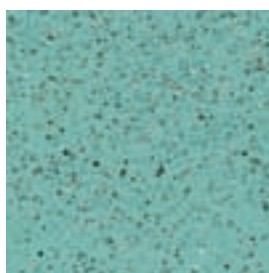
7438 Baleine<sup>(1) (2)</sup>



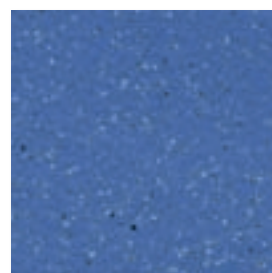
7773 Storm



7306 Buttermilk



7506 Peppermint



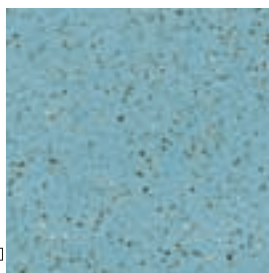
7709 Royal Blue



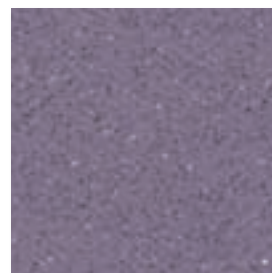
7801 Noir



7302 Sahara<sup>(1)</sup>



7704 Sky Blue



7103 Mulberry

(1) Tarasafe Plus - (2) Tarasafe Super

# SPECIALITY FLOORING

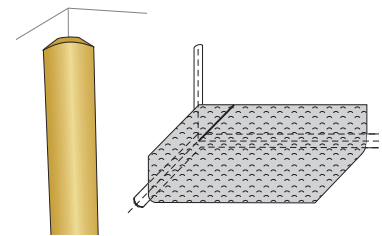
## SHOWER SYSTEM



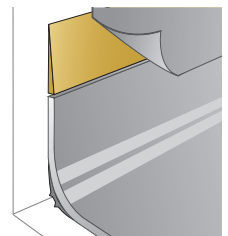
Perfect CR 41 wall weld



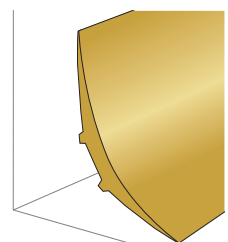
Cove former for internal wall angles CA 12



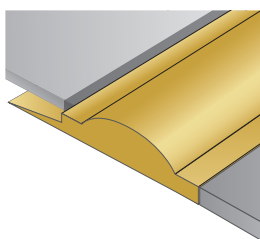
Diminishing profile



Cove former



Shower threshold



Tarafoam: acoustic insulation sub-layer



Drains



See p 247

# SHOWER SYSTEM



The **SHOWER SYSTEM** consists of :

## FLOORCOVERINGS:

► **BRAZILIA SD** is a multilayered calendared floorcovering available in 2 m sheet, treated with Sanosol®, a fungistatic and bacteriostatic treatment. It should be hot welded with a CR 40 welding rod. It comprises a pure Vinyl wearlayer over a through thickness design, (specifically embossed for wet barefoot traffic) and a flexible vinyl backing reinforced with a glass fibre grid.

Or

► **ELEGANCE SD** is a flexible homogeneous calendared compacted floorcovering available in 2 m sheet, with a non directional polychrome design, to offer an even colour throughout the thickness. It should be hot welded with a CR 40 welding rod. It has a fungistatic and bacteriostatic treatment. **ELEGANCE SD** is specifically embossed for wet barefoot traffic and has a group P wear rating.

## WALLCOVERINGS:

► **SHOWER MURAL** is a flexible vinyl sheet wallcovering, available in 2 m sheet, which should be hot welded with a CR 41 welding rod. It comprises a transparent vinyl wearlayer combined with a colour blended flexible vinyl underlayer.

			BRAZILIA SD	ELEGANCE SD	SHOWER MURAL
<b>DESCRIPTION</b>					
Total thickness	EN 428	mm	2.2 (on grainside)	2.4 (on grainside)	0.9
Weight	EN 430	g/m <sup>2</sup>	2200	3100	1500
Width/Length of sheet	EN 426	cm/ml	200/20	200/20	200/30
<b>CLASSIFICATION</b>					
Product specification	-	-	EN 649	EN 649	EN 15 102
European classification	EN 685	class	34-43	34-43	-
Fire rating	EN 13501-1	class	Cfl-s1	Bfl-s1	B-s2,d0
Slip resistance wet: bare foot	EN 51 097	class	AB	AB	-
<b>PERFORMANCES</b>					
Wear resistance	EN 660.2	mm <sup>3</sup>	≤ 2.0	≤ 4.0	-
Wear group	EN 649	group	T	P	-
Dimensional stability	EN 434	%	≤ 0.40	≤ 0.40	≤ 0.40
Residual indentation	EN 433	mm	≤ 0.10	≤ 0.10	-
Thermal conductivity	EN 12 524	W/(m.k)	0.25	0.25	-
Colour fastness	EN 20 105 - B02	degree	≥ 6	≥ 6	≥ 6
Fungistatic & bacteriostatic	-	-	Sanosol®	OK	OK
Chemical resistance	EN 423	-	Good	Good	Good

## CE MARKING

CE	EN 14041	

**Accessories:** SITAR drains, floor/wall diminishing strip, cove former, weldable Vinyl shower threshold, CA12 angle welding rods.

**Installation:** Installation should be carried out in accordance with local standards. Subfloor to be flat, smooth hard, clean and dry prior to laying. Where applicable the subfloor must incorporate an effective Damp Proof Membrane. The material must be allowed to acclimatise for 24 hours prior to installation at a room temperature of between 18-24°C. All seems must be heat welded using Gerflor matching weld rod.

**Maintenance:** No emulsion dressings or polish required.

Maintenance should be carried out regularly to retain the appearance and durability of the floor.

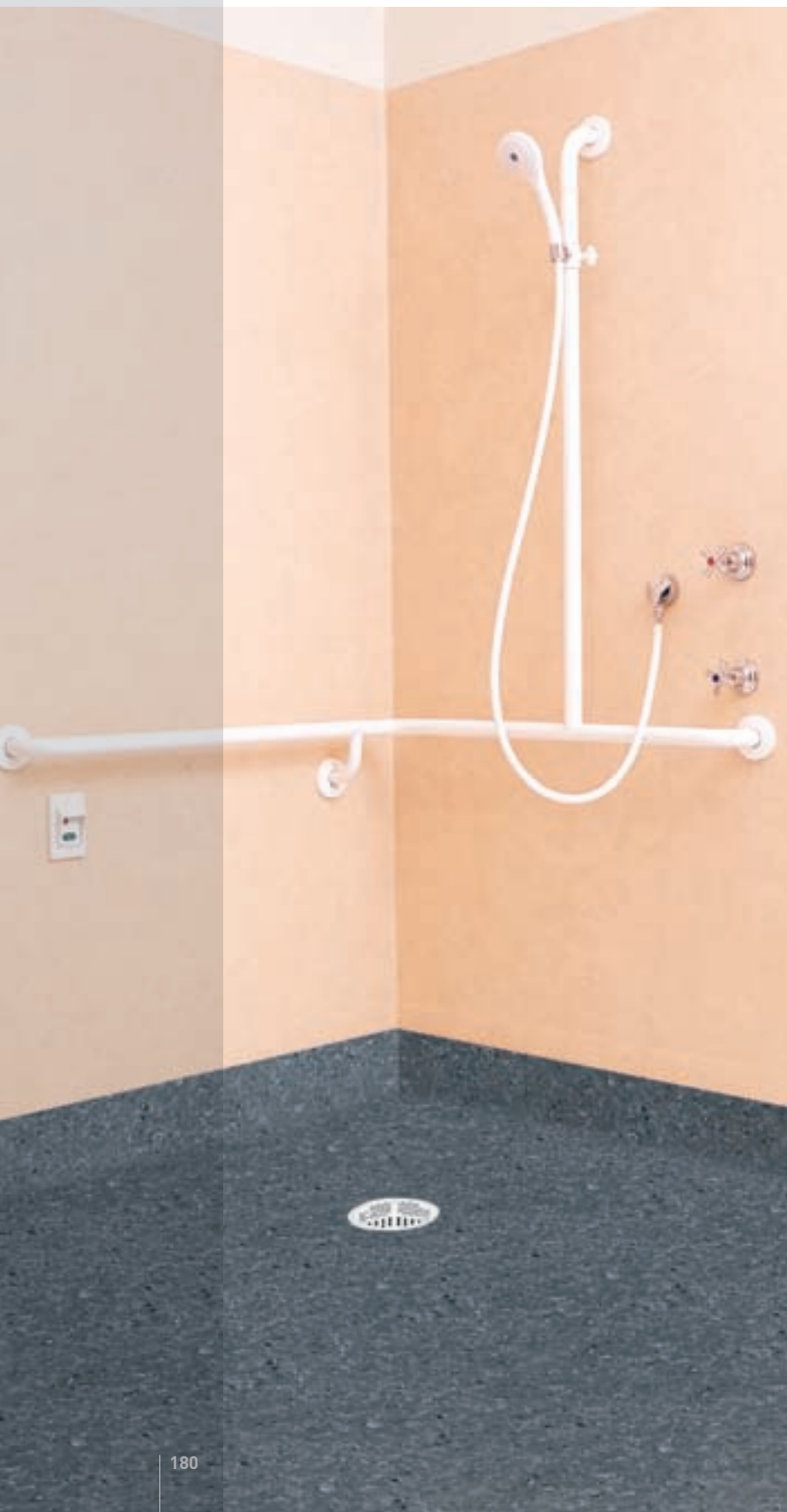
The floorcovering should be maintained with regular sweeping and damp mopping using a neutral cleanser.

*Further installation and maintenance instructions are available from Gerflor.*

# SPECIALITY FLOORING

## SHOWER MURAL COVERING

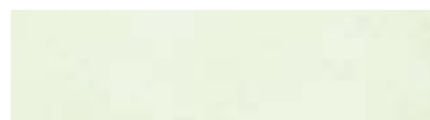
### SHOWER MURAL



7416 Le Touquet



7407 Antibes



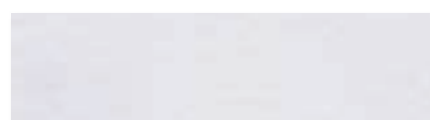
7508 La Ciotat



7702 Saint Malo



7621 Lacanau



7711 Noirmoutier



7218 Cap-breton



7203 Sète



7176 Aix les Bains



7304 Etretat



7102 Honfleur



# ANTISLIP FLOORING: ELEGANCE SD - BRAZILIA SD

## ELEGANCE SD



100% recyclable



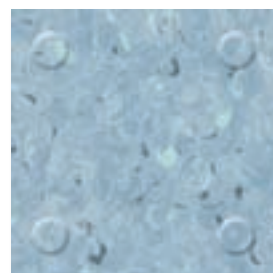
0132 Amethyst



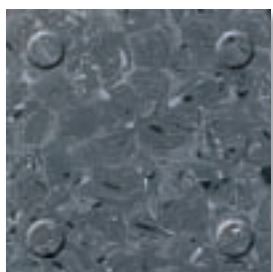
0138 Maple



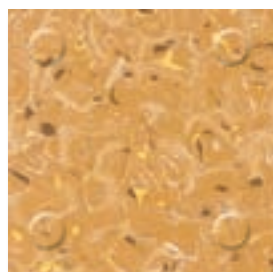
0147 Sycamore



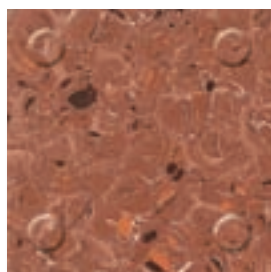
0142 Turquoise



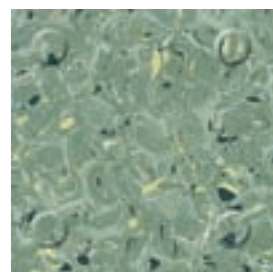
0151 Anthracite



0148 Caramel



0150 Terrazzo



0143 Cactus

## BRAZILIA SD



Sanosol®

100% recyclable



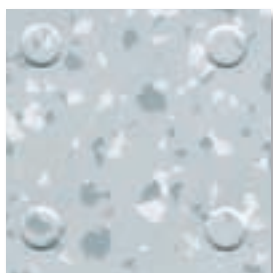
8605 Leticia



8244 Fortaleza



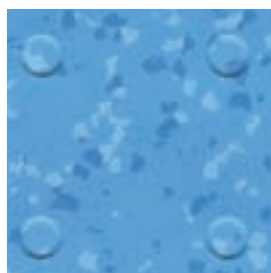
8268 Curitiba



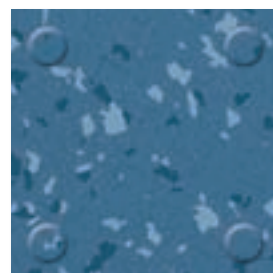
8736 Recife



8386 Boa Vista



8403 Bahia

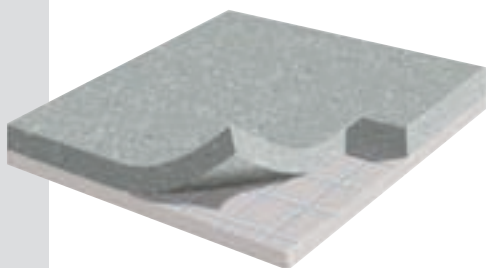


4421 Vitoria

# SPECIALITY FLOORING

## MURAL ULTRA- MURAL CLUB

### ▶ MURAL ULTRA



MURAL ULTRA is a flexible vinyl sheet, multilayered constructed from plasticised Vinyl with coloured grains encrusted into the homogeneous wearlayer. It has a thickness of 1.5 mm for an extended durability.

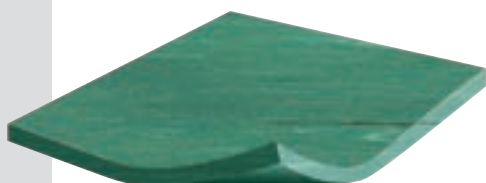
MURAL ULTRA is reinforced with a non-woven glassfibre grid.

The joints are hot-welded to ensure perfect water-tightness.

MURAL ULTRA is treated with Sanosol®, a fungistatic and bacteriostatic treatment.

MURAL ULTRA is resistant to decontamination products (hydrogen peroxide decontamination).

### ▶ MURAL CLUB



MURAL CLUB is a homogeneous flexible vinyl sheet developed from a vinyl floorcovering which complies with EN 649.

It is designed to be a permanent wall covering.

Fully resistant to impact, it acts as a buffer against damage from beds, trolleys and indoor motorised vehicles and other transportation systems.

- ▶ Easily seam welded to produce continuous surfaces.
- ▶ Create a safe and hygienic environment.
- ▶ Flexible and easy to cover.
- ▶ Ideal for walls and ceilings.
- ▶ Recyclable and Eco responsible.

			MURAL CLUB	MURAL ULTRA
<b>DESCRIPTION</b>				
Total thickness	EN 428	mm	1.0	1.5
Weight	EN 430	g/m <sup>2</sup>	1750	2050
Width of sheet	EN 426	cm	150	200
Length of sheet	EN 426	ml	30	21
<b>CLASSIFICATION</b>				
Norm / Product specification	-	-	EN 15 102	EN 15 102
Fire rating	NFP 92 506	class	-	M1
<b>PERFORMANCES</b>				
Dimensional stability	EN 434	%	≤ 0.40	≤ 0.40
Colour fastness	EN 20 105 - B02	-	≥ 6	≥ 6
Chemical product resistance	EN 423	-	OK	OK
Fungistatic & bacteriostatic	-	-	-	Sanosol®

# MURAL ULTRA- MURAL CLUB

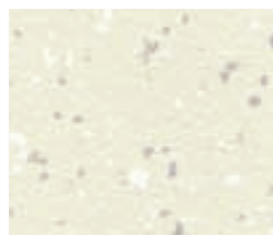


100% recyclable

## MURAL ULTRA



7610 Nord-Norge



7304 Limbourg



7203 Andalusia



7702 Connemara



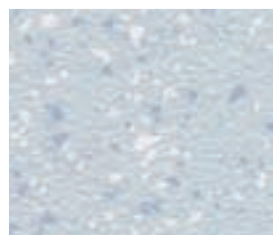
7321 Tenere



7406 Toscana



7710 East Midlands



7102 Provence



7503 Bavaria

## MURAL CLUB



0014 Blanc



0020 Oatmeal



0002 Almond



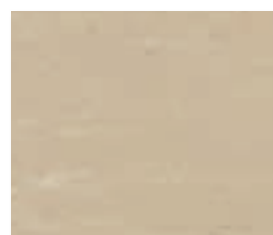
0671 Grege



0081 Dove



0808 Ciel



0541 Beige Sable